

SCANNING SETUP

(there's also a copy in the flash drive)

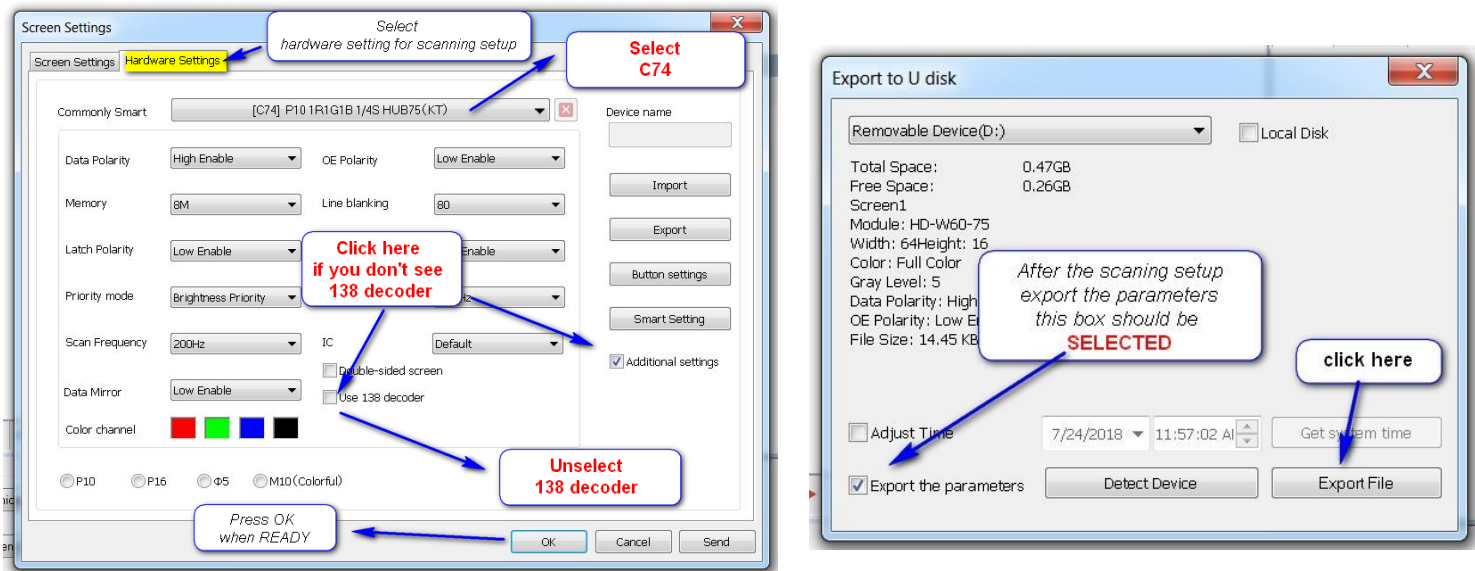
- First watch the installation video in the flash drive provided or just follow instructions

You can also watch it on our website at:
<https://www.ledsigns4less.us/documents-software>

Troubleshooting and Q&A

1. My sign looks scramble

The problem is the scanning mode , check the back of the sign for the scanning mode , normally is **C77 or C56 or C74** with no 138 , If you put the USB in the sign and the letter “USB” don't shows up then the scanning is wrong. It happen when you program for first time or change computer .
(Newer software version please select C77 old version please select C74 and modified 138)



2.- `Resetting the scanning mode

After you have setup the scanning mode , export to the USB , remove USB and INSERT USB in the sign , While is ON , the letters “**USB**” should appear , wait until it says “OK “ and now your sign is setup and Ready to be programmed .

3.- `Flashing on/off

Reset the scanning mode an Insert in the Sign , sometimes you have to do it several times , until the “USB” letter appear . Look at the back of the sign in case the Scanning mode is different .

4.- `Sign goes on/off

If the power supply will fail , all the power supply are 5 Volts and it could be 8 A , 10 A or 15 A .
DON'T insert any other voltage , 12 volts will fry the sign .

For questions about programming and tips , please email at support@usateck.com
 Please include model and size .

Thanks